

MONTHLY MEMBERSHIP PROGRESS REPORT

LOCATION WISCONSIN

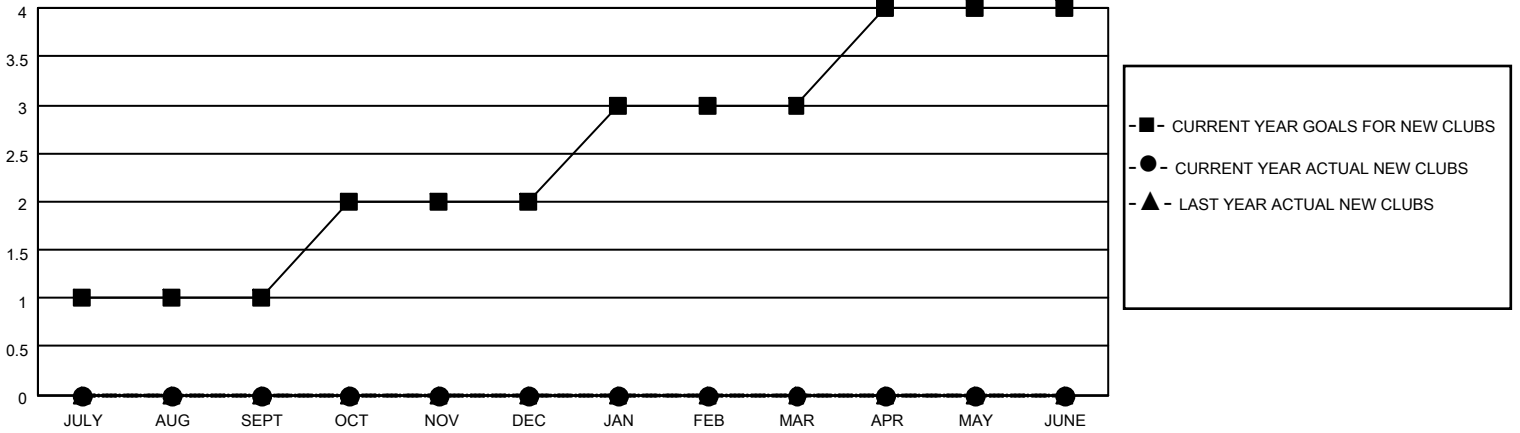
District 27 B1

Results as of: 5/31/2021

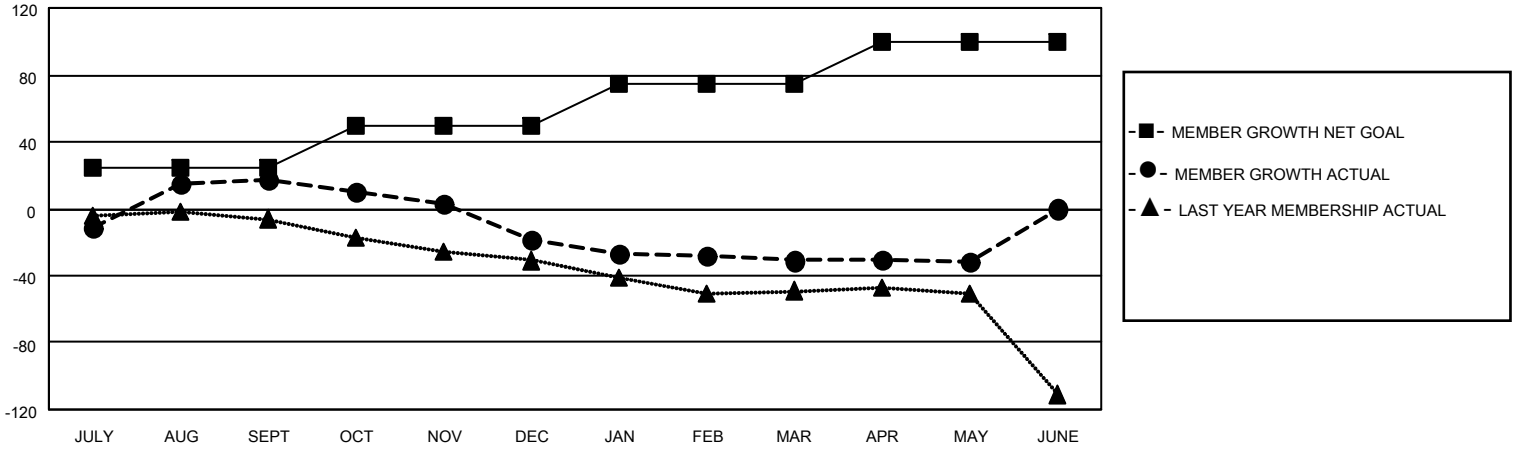
Clubs			
RESULTS FOR 2020-2021			
QUARTER	NEW CLUB GOAL	NEW CLUBS	DROPPED CLUBS
JULY/AUG/SEPT	1	0	1
OCT/NOV/DEC	1	0	0
JAN/FEB/MAR	1	0	0
APR/MAY/JUNE	1	0	0

Members			
RESULTS FOR 2020-2021			
QUARTER	MEMBER GROWTH NET GOAL	MEMBER GROWTH ACTUAL	DROPPED MEMBERS ACTUAL (including transfers)
JULY/AUG/SEPT	25	72	41
OCT/NOV/DEC	25	16	51
JAN/FEB/MAR	25	20	31
APR/MAY/JUNE	25	23	22

GOALS AND ACTUAL NEW CLUBS CUMULATIVE



GOALS AND ACTUAL MEMBERS CUMULATIVE



DROPPED CLUBS: 1

33 CLUBS OF 64 ADDED 1 OR MORE NEW MEMBERS

GENDER DISTRIBUTION

MALE 1,378 (75.05%)
FEMALE 458 (24.95%)

DROPPED MEMBERS

[CLICK HERE FOR CUMULATIVE MEMBERSHIP DATA](#)

DECEASED	36
CLUB CANCELLED	0
OTHER	109
TOTAL	145

TOTAL FAMILY UNIT MEMBERS	340
FAMILY MEMBERS PAYING HALF DUES	174